



More Connectivity. More Proof. More Utility.

Operated in collaboration with Minutes Network Token X Ltd (St Lucia) and World Mobile Treasury Group Ltd (BVI).

“Utility” refers to functional participation within the Unity Edge Network, not token or investment utility.



© 2025 Unity Network Limited (Hong Kong). All rights reserved.



# Executive Summary

Unity Network Limited operates a composable, people-powered global edge network with vast geo-diverse coverage. It collects real-time telemetry and network data and delivers it to carriers and enterprises, helping them detect and prevent fraud, revenue leakage, and other network risks.

Unity also supports critical functions such as data transit and other infrastructure services, powered not by centralized servers but by real users across the globe.

By introducing a new sharing economy model, Unity enables participants to earn rewards directly for powering the network - bridging real-world telecom activity with decentralized digital value.

Participation is usage-based and non-financial. Participants perform Proof-of-Work related tasks and receive operational remuneration for contribution. No part constitutes an offer of securities or investment interests.



# Proof at the Edge

- Unity places proof where telecom traffic actually flows - at the edge.
- Every device and every IP address contributes to a global, real-time ledger of connectivity events.
- Telemetry is timestamped, hashed to WMChain and auditable by carriers or regulators.
- This framework removes subjective reporting and introduces data integrity verified by thousands of independent participants. Enterprises gain evidence-based coverage maps and governments can monitor quality-of-service objectively.
- Proof becomes a commodity of trust.





# Unity Software Licenses

A Unity Software License activates the Unity Application. Each license represents the right to perform and earn from an array of services under Hong Kong law.

## Core Features:

- Purchase Unity Credits - Credits fuel verification sessions; each session produces proof-of-performance data recorded on-chain.
- Top Up Anytime - Credits remain unused until the (leased) license is activated and operational.
- Unity Operator Software Licenses are leasable from within the Unity Node Operator's management portal.

Unity Network Limited provides software and verification access only and does not mint or sell tokens. Any MNTx or WMTx allocations are issued separately by their treasuries.



# Digital Lease Model

Unity Operator Software Licenses can be leased directly through the Unity Network Application, enabling effortless collaboration between Unity Node Operators and Unity License Operators.

Within the app, Node Operators define the percentage of rewards to be shared under an instant, automated digital contract - creating a transparent and frictionless system for expanding participation across the network.



# The Global Telecommunications Market

The global telecom market is worth approximately \$2 trillion USD annually. Unity is built to lead in network integrity and verification through its decentralized growth model.

With unmatched global scale being enabled by its distributed edge devices, Unity is positioned as the preferred partner for carriers and enterprises worldwide.

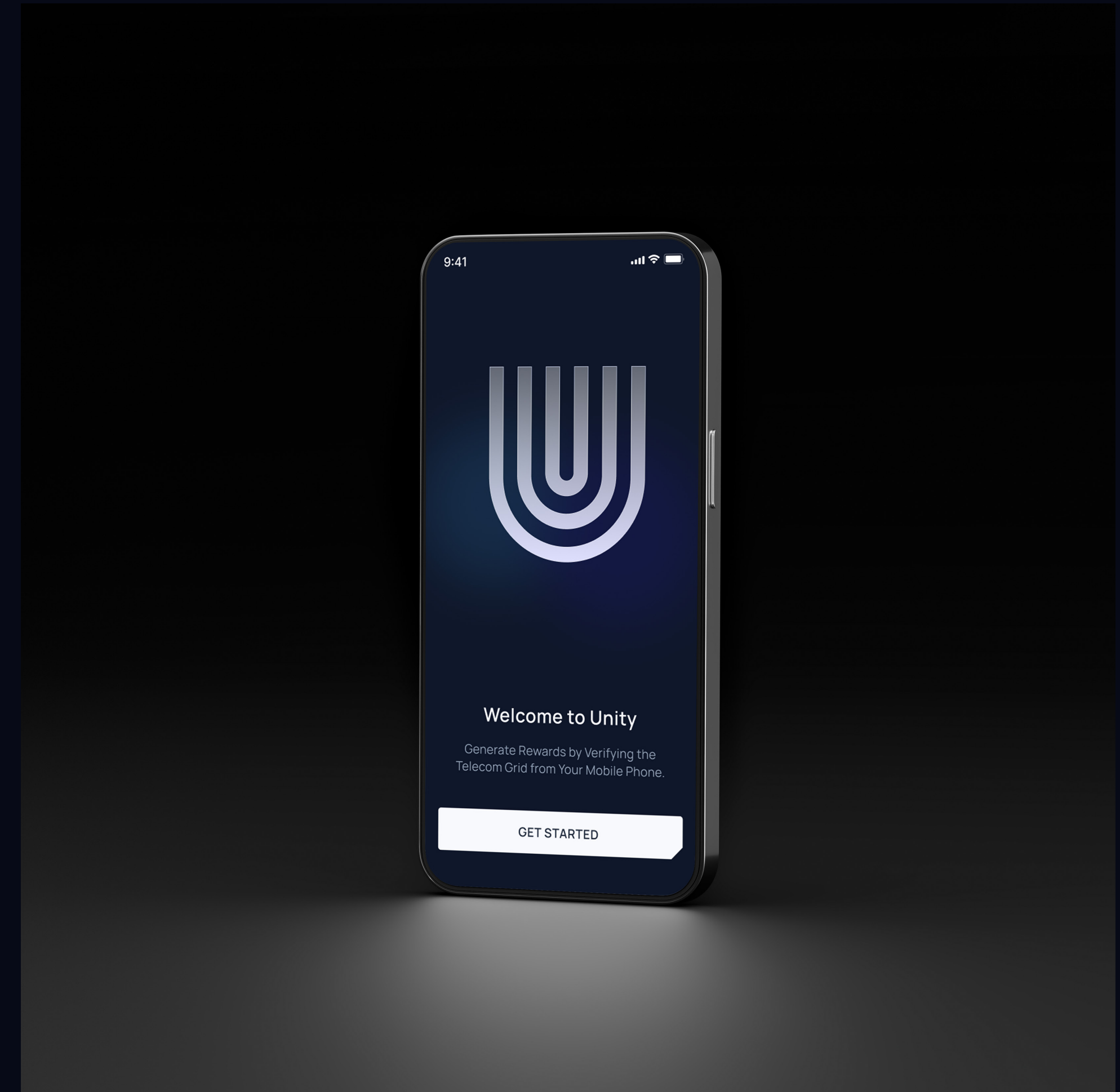


# Proof of Work and Network Fees

Unity ties real-world demand to community rewards:

- Unity provides a range of decentralised telecom services to carriers and enterprises and generates network service fees.
- Unity License Operators earn 75% of the network service fees they generate. If their license is leased, a portion of those fees flows back to the connected Unity Node Operator.
- Unity Node Operators are rewarded from work contributed by active or leased Unity License Operators.
- 25% of all network service fees are pooled and transferred to WMTx and MNTx to support the networks Earth Nodes, Switch Nodes, and Validation Nodes.

Unity Nodes do not dilute existing MNTx and WMTx pools - instead, they strengthen them with fees generated by the Unity Global Edge Network.



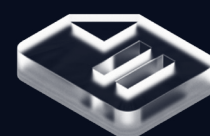
# Unity Unwrapped

Participate using your smartphone, expand Unity Network's global presence and contribute Proof-of-Work to generate rewards.



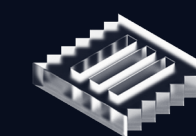
## Scarcity

6,000 Unity Nodes exist, each with 200 Unity Operator Software Licenses.



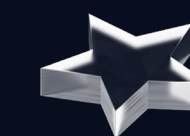
## Proof-of-Work

Supporting Global Telecommunications and Enterprises.



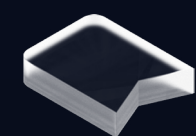
## On-Chain Proof

All PoW documented and hashed to WMChain for verifiable auditability.



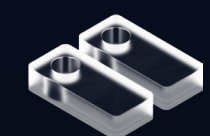
## Utility-Driven Rewards

Powered by fees generated through services provided to global enterprise & carrier industries.



## Ownership

Unity Node Software Licenses & Unity Operator Software Licenses are represented by NFTs.



## WMTx & MNTx Included

14,575 MNTx + 15,119 WMTx included, locked for 24 months\*.



## Instant Rewards

Withdraw your rewards in a selection of partnered cryptocurrencies.



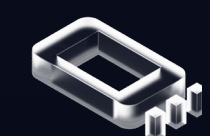
## Fuelling MNTx & WMTx

25% of the fees generated are transferred to WMTx & MNTx.



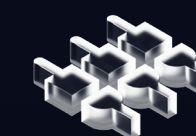
## Simple Installation

Unity is compatible with most Android and iOS mobile devices.



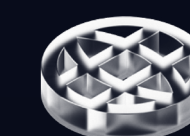
## Switch Nodes

Switch Nodes manage the initiation and routing of calls across the global telecom grid.



## Validation Nodes

Validation Nodes confirm the integrity and connectivity of the edge mobile devices.

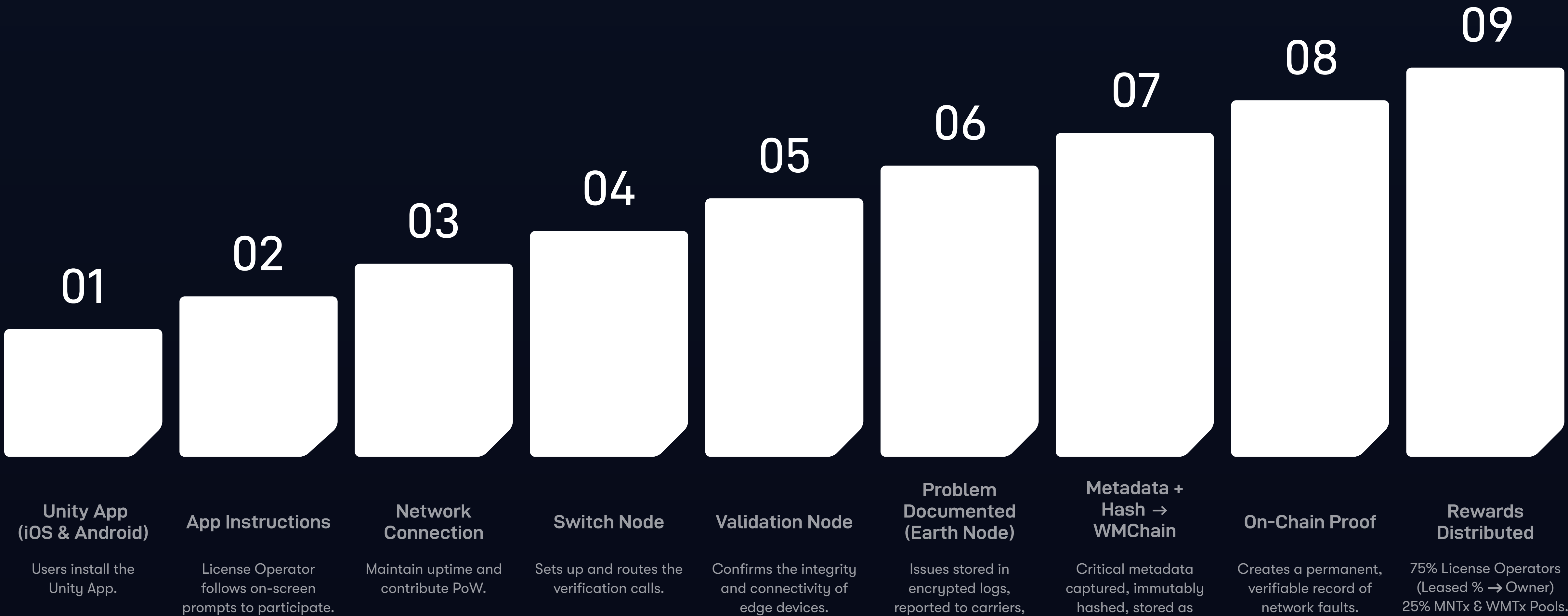


## Earth Nodes

Detected issues are logged, encrypted, and auto-reported by Earth Nodes, with API access.

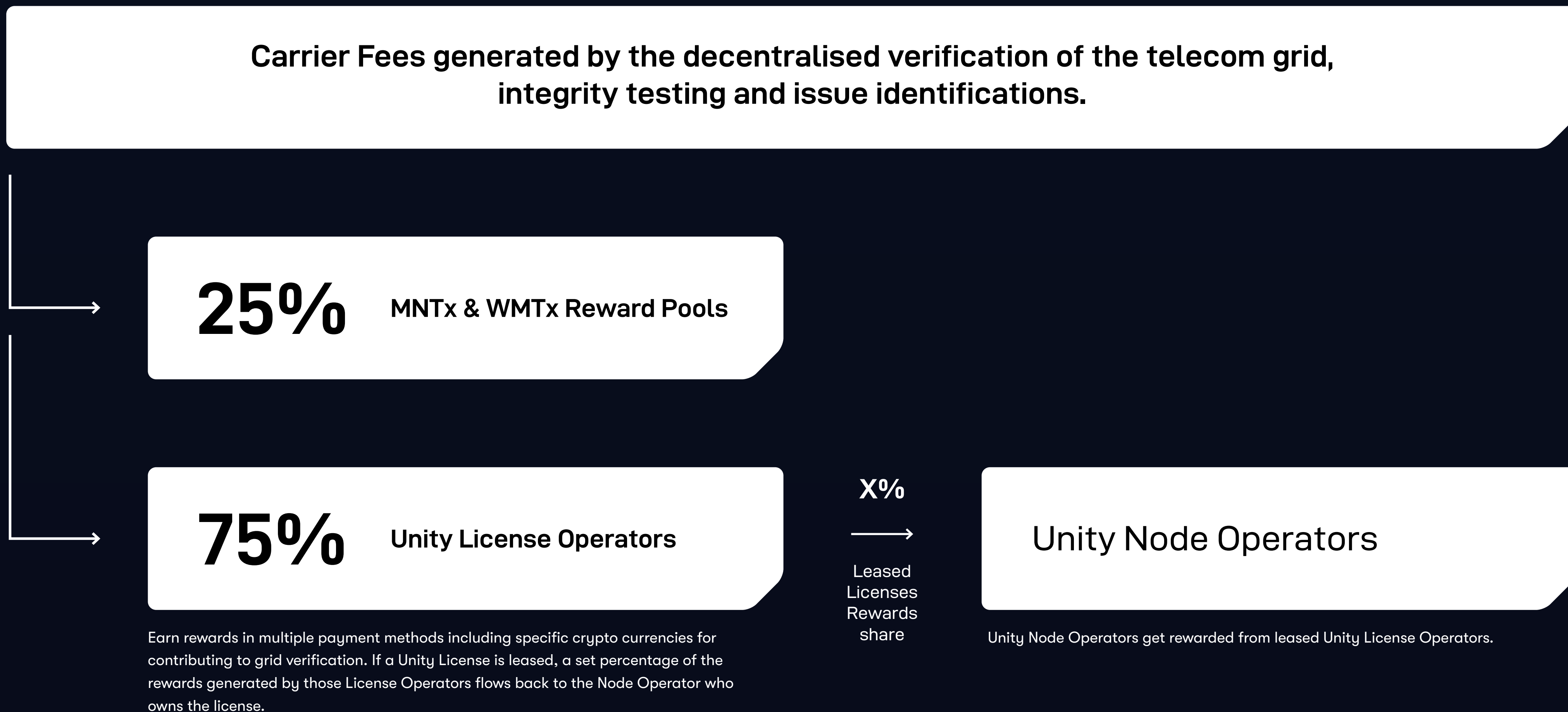


# Unity Operational Flow

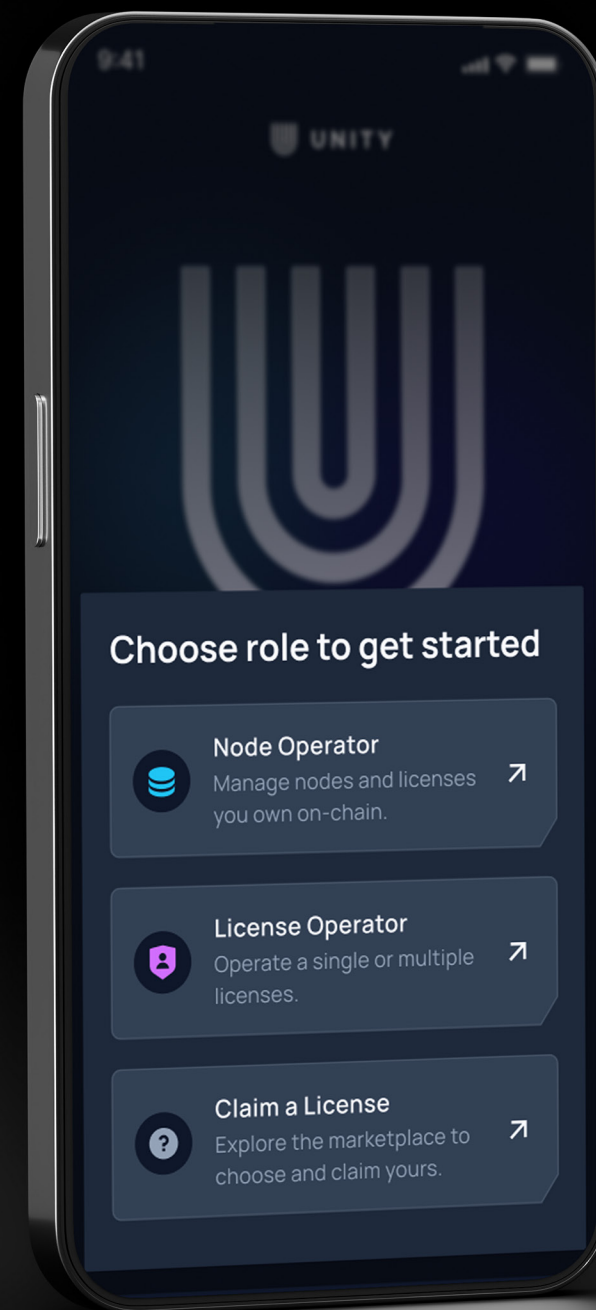




# Unity Carrier Fee Sharing Flow







# Governance and Transparency

- Unity Network Limited operates under Hong Kong law - Companies Ordinance (Cap 622), Securities and Futures Ordinance (Cap 571) and AMLO (Cap 615).
- Data handling follows the Personal Data (Privacy) Ordinance and GDPR equivalents. Only anonymized data is processed; no PII is stored.



# Architecture Overview

Unity's infrastructure is composed of three interoperable layers designed for transparency, resilience, and scale. the MNTx and WMTx sharing economies.



## Switch Nodes

Route and timestamp telecom packets, creating verifiable event trails that anchor each verification in time.



## Validation Nodes

Verify signal integrity, eliminate anomalies, and prevent fraudulent activity within the data stream.



## Earth Nodes

Aggregate validated data, encrypt results, and provide API access to authorised carriers, regulators, and enterprise clients.

Each layer functions autonomously but connects through the Unity protocols managed by Unity Network Limited (Hong Kong). Together they form a composable framework capable of supporting all compatible regions and operator networks.





More Utility. More Proof. More Rewards.

Unity is a composable, people-powered, global Edge Network.

